

iQ300, Condenser tumble dryer, 8 kg
WT45N203GB



iSensonic condenser dryer with sensor-controlled autoDry technology and softDry drum for optimal textile care.

- ✓ autoDry – gentle and precise drying that protects your clothes.
- ✓ speedPack – Save time with our fast and highly efficient dryers.
- ✓ Outdoor programme – dry your waterproof and outdoor clothing safely.
- ✓ easyClean filter: easy to keep clean
- ✓ rapid40: carefully and quickly dries small loads.

Built-in / Free-standing: Freestanding
Removable top: No
Door opening: Right
Length electrical supply cord: 179.5 cm
Dimensions: 842x598x613 mm
Weight: 41.7 kg
EAN code: 4242003929056
Connection Rating: 2800 W
Fuse protection: 13 A
Nominal power: 220-240 V
Frequency: 50 Hz
Capacity: 8.0 kg
Energy efficiency rating: B
Energy consumption electric dryer, full load - NEW (2010/30/EC):
4.71 kWh
Standard cotton programme time at full load: 150 min
Energy consumption electric dryer, partial load - NEW (2010/30/EC):
..... 2.56 kWh
Standard cotton programme time at partial load: 83 min
Weighted annual energy consumption, electric dryer - NEW
(2010/30/EC): 560.0 kWh/annum
Weighted programme time: 112 min
Average condensation efficiency full load (%): 88 %
Average condensation efficiency partial load (%): 88 %
Weighted condensation efficiency (%): 88 %



WZ11410	Stacking kit
WZ20400	Stacking kit with pull-out shelf
WZ20600	Wool in basket - accessory
WZDP20D	Platform with pull-out, dryer, cubic

iQ300, Condenser tumble dryer, 8 kg WT45N203GB

Performance

- Energy Efficiency Class¹: B
- Energy²: 560 kWh
- Capacity: 1 - 8 kg
- Programme time³: 150 min
- Noise level: 64 dB (A) re 1 pW
- Condensation efficiency class⁴: B
- Condensation efficiency⁵: 88 %
- Electronic Humidity Control

Programmes/functions

- Standard programmes: cotton, easy care
- Special programmes: Woollens Finish, mixed fabrics, outdoor, timed programme warm, timed programme cold, hygiene, lingerie, rapid 40, shirts 15

Key features

- Anti crease cycle 120 min at the end of the programme
- Touch control buttons: low heat, less ironing, programme length, fine-tuning for drying level, 24 h end time delay, less ironing, fine-tuning for drying level, low heat, programme length, end time delay, Start / Reload / Pause

Additional features

- Fully electronic control dial for sensor and timed programmes
- Fully electronic control dial for sensor drying, including timed and special programmes
- LED Display for remaining time and 24 hours time delay, programme status indication, special functions
- Sensitive drying: large softDry stainless steel drum system and revolution drying system
- No
- AntiVibration design: for greater stability and quietness
- Drum interior light
- Container for condensed water
- Child lock
- End of cycle buzzer
- NewValue door with cover glass, black-black
- pull-open latch
- Metal door catch
- Door hinge: right-hand

Technical Information

- Slide-under installation
- Dimensions (H x W): 84.2 cm x 59.8 cm
- Appliance depth: 61.3 cm
- Appliance depth incl. door: 65.1 cm
- Appliance depth with open door: 110.5 cm

¹ At a range of energy efficiency classes from A+++ to D

² Energy consumption kWh per year, based on 160 drying cycles of the standard cotton programme at full and partial load, and the

consumption of the low power modes

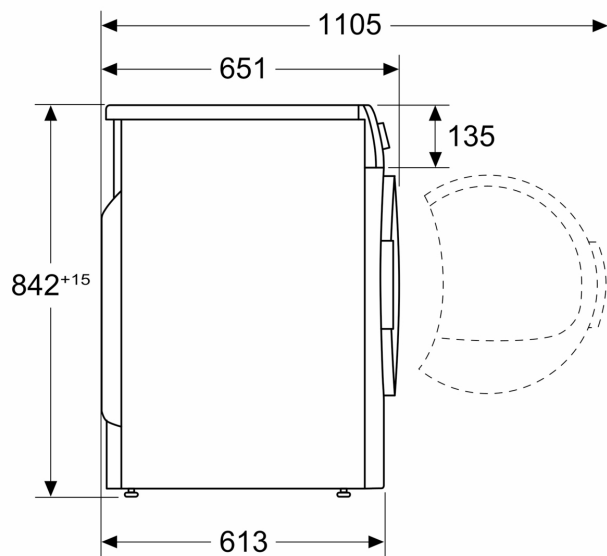
³ Programme time of the standard cotton programme at full load

⁴ On a condensation efficiency class scale from A to G

⁵ Weighted condensation efficiency for the standard cotton programme at full and partial load

**iQ300, Condenser tumble dryer, 8
kg
WT45N203GB**

Measurements in mm



Measurements in mm

